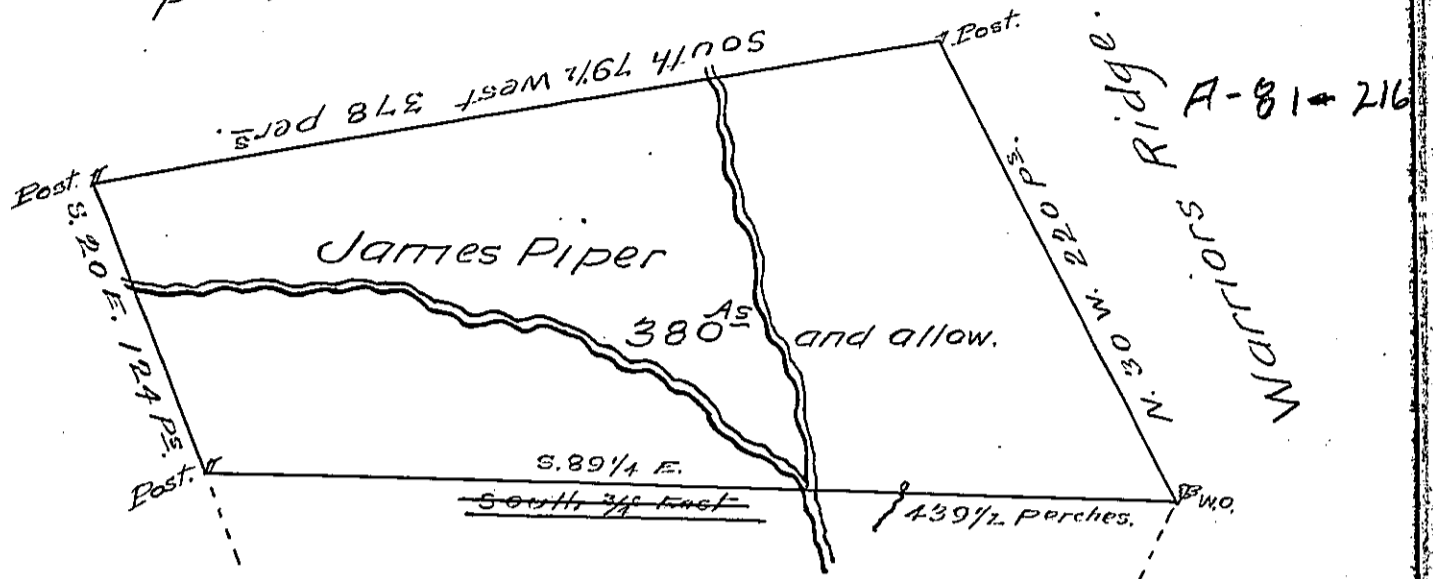


C-208-8
William Piper's Land.



John Brady's Land.
C-8-45

A Draught of a Tract of Land situate on
 Vineyard or Crooked Creek in the County of Cum-
 berland containing Three hundred and ~~thirty~~ eighty
 Acres and the usual allowance of six acres & Ct.
 for Roads &c. Surveyed the 29th October 1765 for
 James Piper in pursuance of a Warrant dated
 the 10th day of September 1762

R. Richard Tea Dept. Surveyr.

To John Lukens Esq^r.
 Surveyor General.

IN TESTIMONY that the above is a copy of the original remaining on file in
 the Department of Internal Affairs of Pennsylvania, made
 conformably to an Act of Assembly approved the 16th day of
 February, 1833, I have hereunto set my Hand and caused
 the Seal of said Department to be affixed at Harrisburg,
 this Seventeenth day of April 1906.

James B. Brown
 Secretary of Internal Affairs.